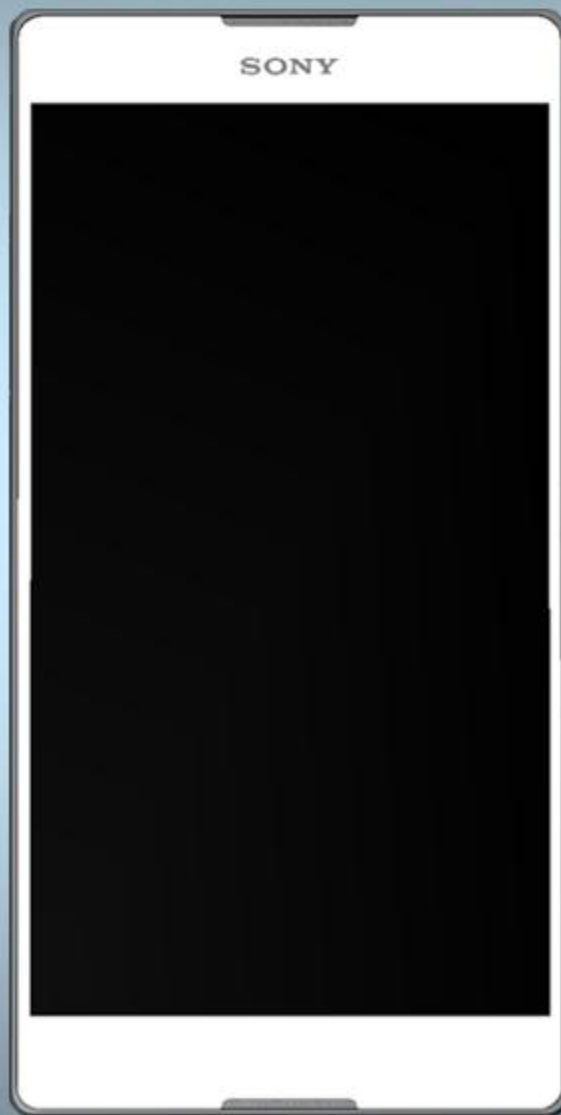


# Component Replacement

- electrical -



*Xperia™ T2 Ultra Dual D5322, XM50h*  
*Xperia™ T2 Ultra D5303, D5306, XM50t*

**CONTENTS**

1 Replaceable Components ..... 3

2 Component Placing..... 5

3 Additional Repair info ..... 6

4 Revision History ..... Error! Bookmark not defined.

*For general information about electrical repair related issues, refer to 1220-1336: Generic Repair Manual - electrical*

*Test after electrical replacement: refer to 1273-1772 Mechanical Test Instruction*

*Do not remove shield can lids (Heat pasta are added and RF performance will be damaged)*

# 1 Replaceable Components

## EXPLANATION OF ABBREVIATIONS USED IN THE COLUMN 'COMMENTS' BELOW

### **COMPONENT LOCATION**

**P** = Primary side

**S** = Secondary side

### **REPAIR METHOD**

**HA** = Hot Air (removal & mounting)

**ST** = Soldering Tool (removal & mounting)

**HA/ST** = Hot Air for removal - Soldering Tool for mounting

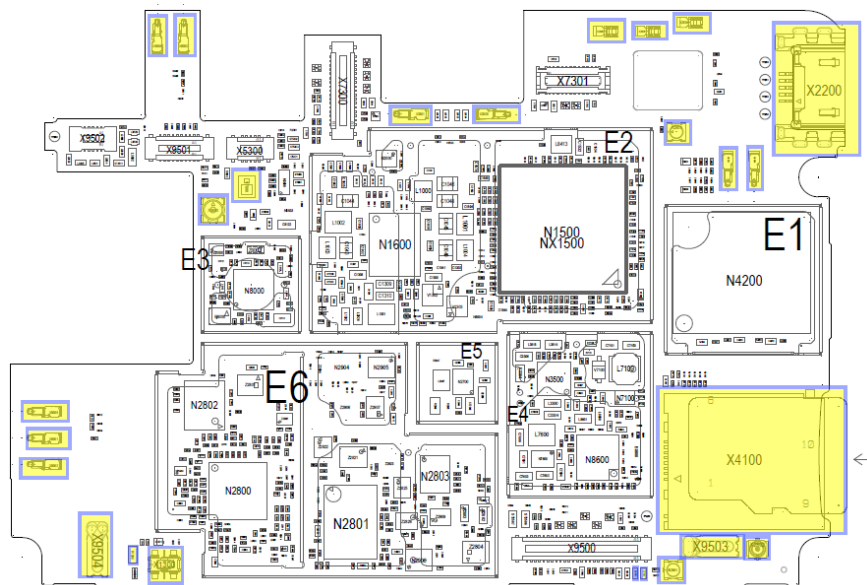
**BGA** = BGA Station

**BH** = Bottom Heater

### **ADDITIONAL INFORMATION**

⇒1 (2,3,4, etc.) = Proceed to 'Additional Repair Info' for further instructions in the indicated section(s).

Position	Component	Part no.	Comments
B3500	Mic 3.76 Silicon 3.76 x 2.95 x 1.1 analo	1281-5587	S HA+BH ⇒1
L2200	Filter 220ohm 0603 2A 0.05ohm Bead	1001-1896	S HA+BH ⇒2
L3610	Ferrite B 0.0 Ohm 0.0 A 600ohm 0402 0.3A	1000-0132	P HA+BH ⇒3
L3611	Ferrite B 0.0 Ohm 0.0 A 600ohm 0402 0.3A	1000-0132	P HA+BH ⇒3
R1306	Resistor 0.01 Ohm +/-1% 200.0 mW (1.6x0.	1238-2147	P HA+BH ⇒4
V7800	LED White 2.04 x 1.64 x 0.75 mm	1257-1236	P HA+BH ⇒5
X1300	Conn BtB Plug 4p HIROSE/BM22	1264-8491	P HA+BH ⇒6
X2200	Conn USB B Receptacle 5p	1270-2769	P HA+BH or BGA ⇒7
X2801	Conn Coax Receptacle 1p	1237-5326	P HA+BH ⇒8
X2802	Conn Coax Receptacle 1p	1261-3585	P HA+BH ⇒9
X2803	Conn Coax Receptacle 1p	1237-5326	P HA+BH ⇒10
X2804	Conn Leaf Spring Plug 1p	1271-9649	P HA+BH ⇒11
X2805	Conn Leaf Spring Plug 1p	1271-9649	P HA+BH ⇒11
X2806	Conn Leaf Spring Plug 1p	1271-9649	P HA+BH ⇒11
X3500	Conn Leaf Spring Plug 1p Antenna/GND Spr	1239-2123	P HA+BH ⇒12
X3501	Conn Leaf Spring Plug 1p Antenna/GND Spr	1239-2123	P HA+BH ⇒12
X4100	Card Conn Micro SD	1254-2021	P HA+BH or BGA ⇒13
X8000	Conn Coax Receptacle 0p test switch	1221-6477	P HA+BH ⇒14
X8001	Conn Leaf Spring Plug 1p Antenna/GND Spr	1239-2123	P HA+BH ⇒15
X8002	Conn Leaf Spring Plug 1p Antenna/GND Spr	1239-2123	P HA+BH ⇒15
X8003	Conn Leaf Spring Plug 1p Antenna/GND Spr	1239-2123	P HA+BH ⇒16
X8004	Conn Leaf Spring Plug 1p Antenna/GND Spr	1239-2123	P HA+BH ⇒16
X8005	Conn Leaf Spring Plug 1p Antenna/GND Spr	1239-2123	P HA+BH ⇒15
X8600	Conn Leaf Spring Plug 1p Antenna/GND Spr	1239-2123	P HA+BH ⇒17
X8601	Conn Leaf Spring Plug 1p Antenna/GND Spr	1239-2123	P HA+BH ⇒17
X9503	Conn Leaf Spring Receptacle 1p	1266-7705	P HA+BH ⇒18
X9504	Conn Leaf Spring Receptacle 1p	1266-7705	P HA+BH ⇒18
X9505	Conn Leaf Spring Plug 1p Antenna/GND Spr	1239-2123	S HA+BH ⇒18
X9506	Conn Leaf Spring Plug 1p Antenna/GND Spr	1239-2123	S HA+BH ⇒18

[illegible]

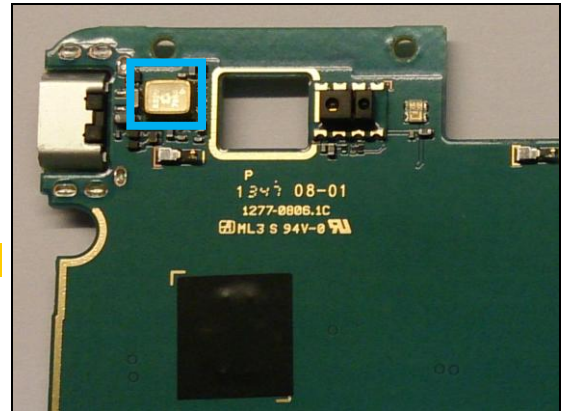
5(11)

### 3 Additional Repair info

1

**B3500**

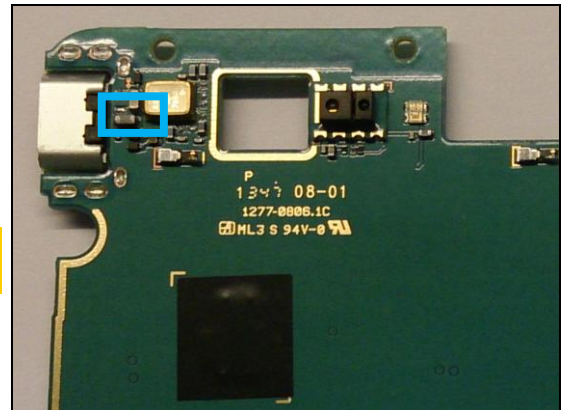
**Replace if no audio from secondary mic**



2

**L2200**

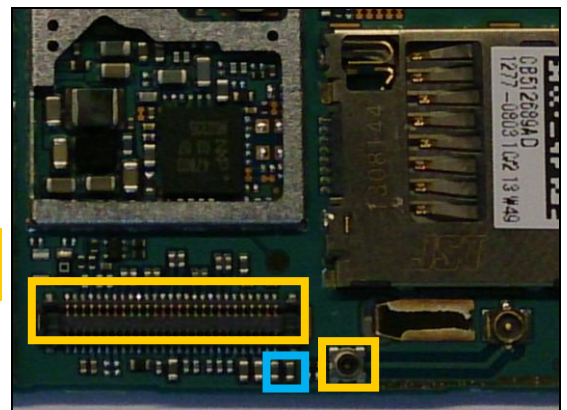
**Replace if open circuit (USB charger or data transfer not working)**



3

**L3610, L3611**

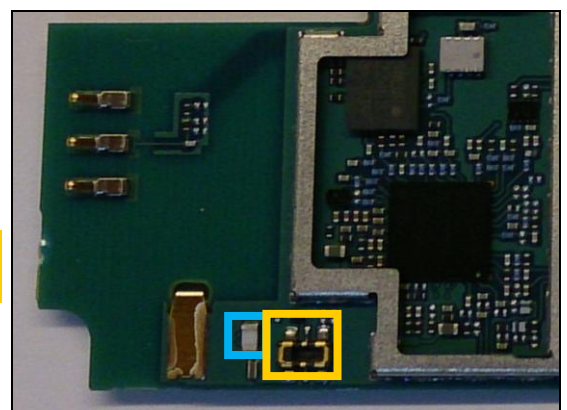
**Replace if open circuit (Vibrator not working)**  
**Protect the BtB and RF connectors with capton tape!**



4

**R1306**

**Replace if open circuit (Phone Dead)**  
**Protect the BtB connector with capton tape!**



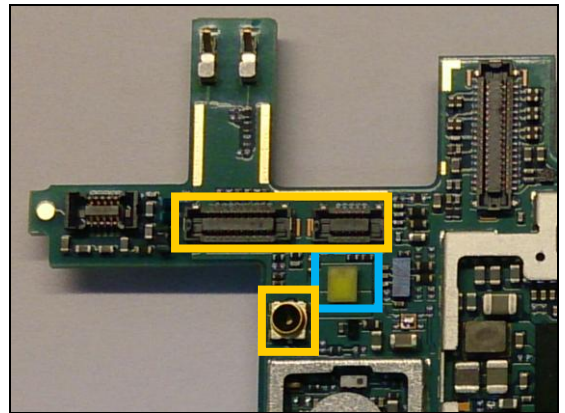
## Repair Actions: Additional Repair Info

5

V7800

*Replace if Flash LED not working*

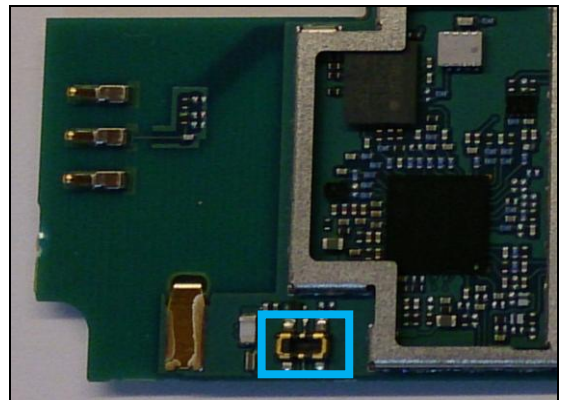
*Protect the BtB and RF connectors with capton tape!*



6

X1300

*Replace if mechanical damaged. (Phone dead or power off)*

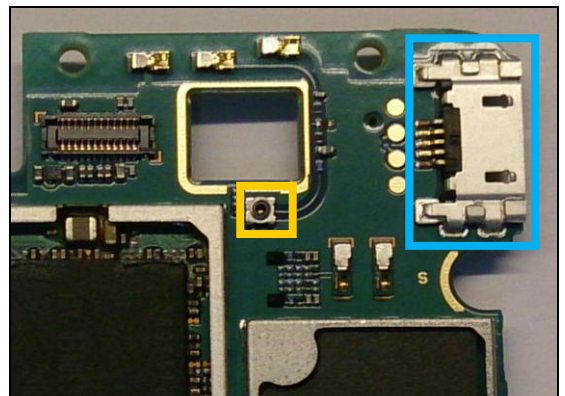


7

X2200

*Replace if mechanical damaged (USB charger or data transfer not working)*

*Protect the RF connector with capton tape!*

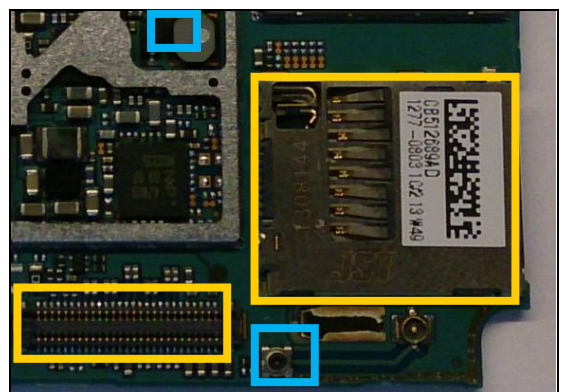


8

X2801

*Replace if open circuit 1-2 (No or bad network, main antenna)*

*Protect the BtB and SD connectors with capton tape!*





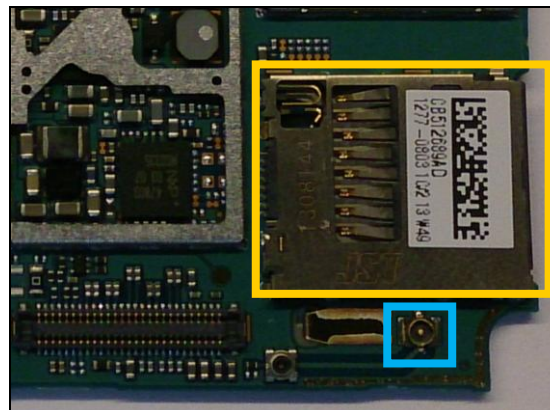
## Repair Actions: Additional Repair Info

**9**

**X2802**

*Replace if mechanical damaged (No or bad network, main antenna)*

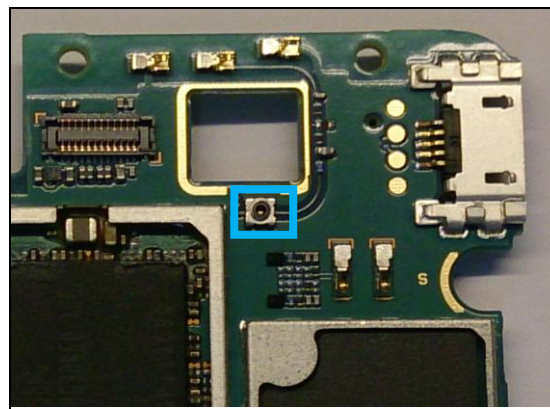
*Protect the SD connector with capton tape!*



**10**

**X2803**

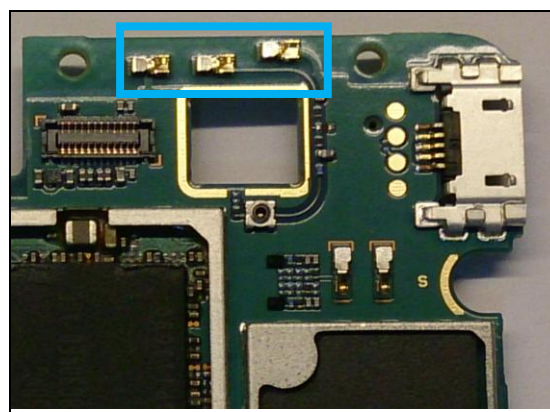
*Replace if open circuit 1-2 (No or bad network, diversity antenna)*



**11**

**X2804, X2805, X2806**

*Replace if mechanical damaged (No or bad network, diversity antenna)*

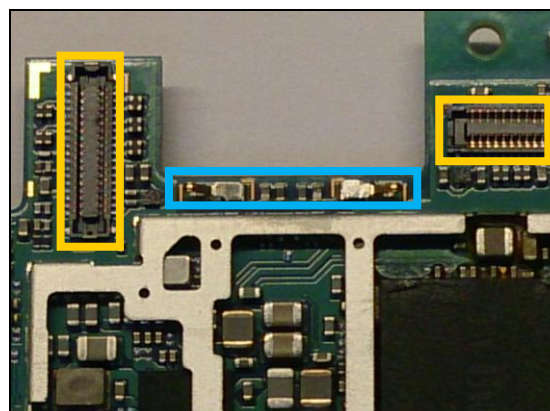


**12**

**X3500, X3501**

*Replace if mechanical damaged (No ear speaker)*

*Protect the BtB connector with capton tape!*



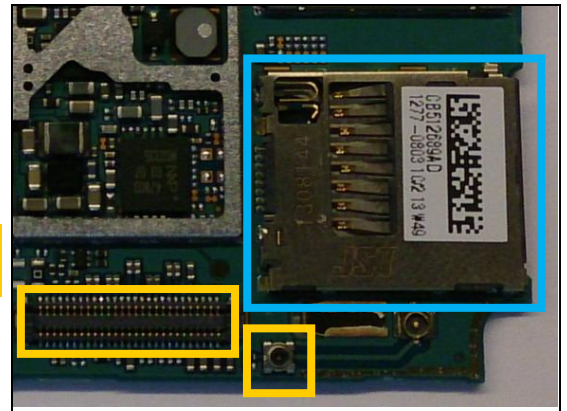


## Repair Actions: Additional Repair Info

**13**

**X4100**

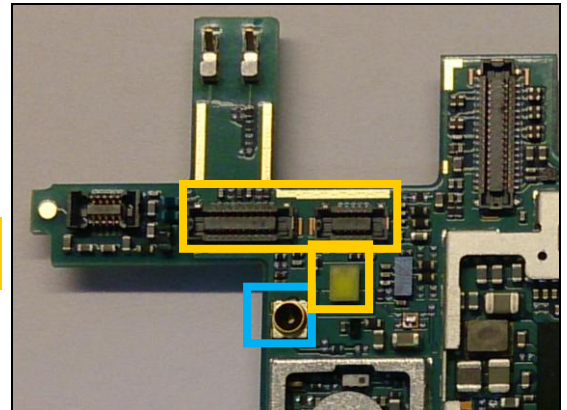
*Replace if mechanical damaged (No SD card )  
Protect the BtB and RF connectors with capton tape!*



**14**

**X8000**

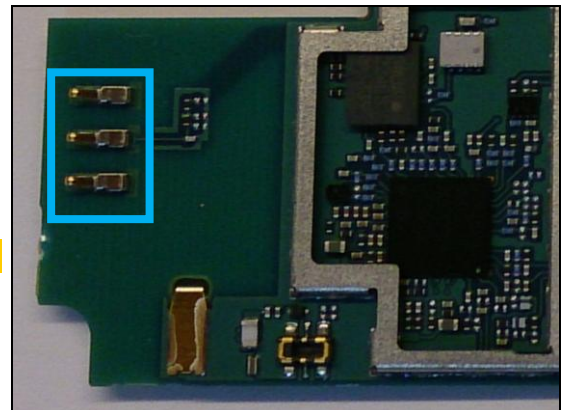
*Replace if open circuit 1-2 (No or bad WLAN / BT)  
Protect the BtB connectors and LED with capton tape!*



**15**

**X8001, X8002, X8005**

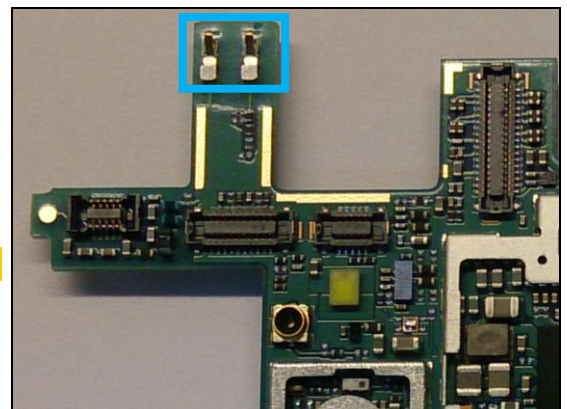
*Replace if mechanical damaged (No or bad WLAN / BT)*



**16**

**X8003, X8004**

*Replace if mechanical damaged (No or bad GPS)*

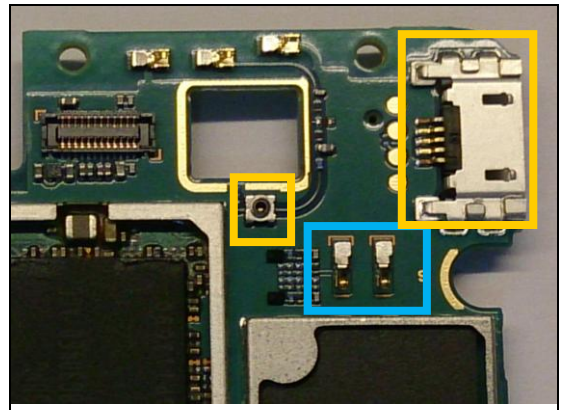


## Repair Actions: Additional Repair Info

**17**

X8600, X8601

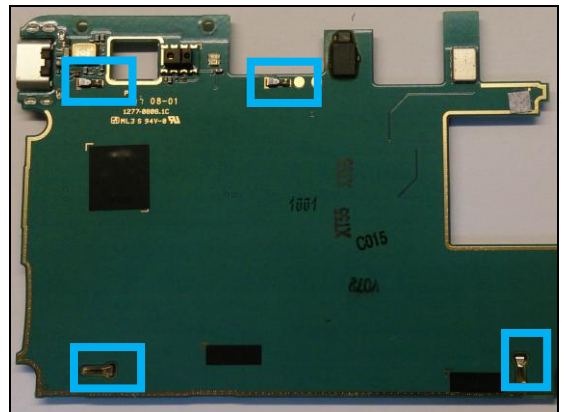
*Replace if mechanical damaged (No or bad NFC)*  
*Protect the USB and RF connectors with capton tape!*



**18**

X9503, X9504, X9505, X9506

*Replace if mechanical damaged (Grounding Pin)*



## 4 Revision History

Rev.	Date	Changes / Comments
1	2014-05-30	Initial release